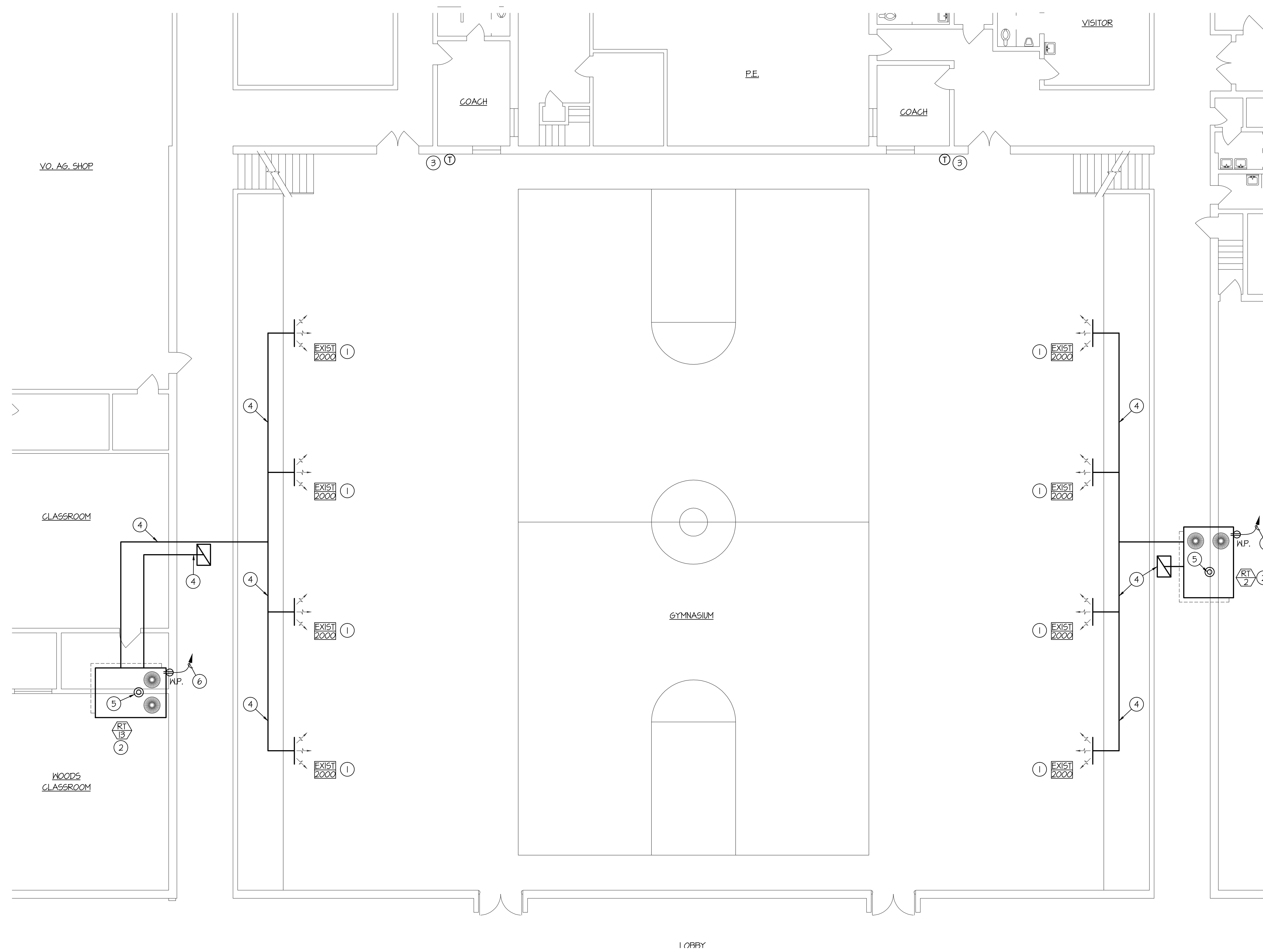
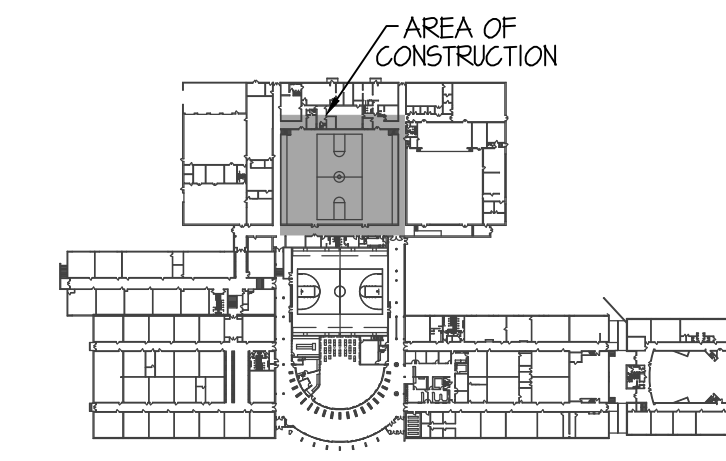


F:\180256 HIGHLAND HS RTU REPLACEMENT\180256 ME-2.dwg Feb 11, 2014 - 2:21pm



GYMNASIUM MECH. / ELEC. FLOOR PLAN

SCALE: 1/8" = 1'-0"



KEY PLAN
NO SCALE

PLAN NOTES:

- ① EXISTING SIDEMALL SUPPLY REGISTER TO REMAIN. BALANCE TO CFM SHOWN.
- ② REMOVE EXISTING ROOFTOP UNIT AND REPLACE WITH NEW UNIT. CONNECT NEW UNIT TO EXISTING DUCTWORK, GAS PIPING, ELEC. AND CONTROLS. MODIFY EXISTING METAL RAILS ON ROOF AS REQUIRED FOR NEW ROOFTOP UNIT.
- ③ EXISTING THERMOSTAT TO REMAIN. RECONNECTION TO NEW ROOFTOP UNIT BY OWNER.
- ④ EXISTING SUPPLY & RETURN AIR DUCTWORK TO REMAIN.
- ⑤ INSTALL UL RATED SMOKE DETECTOR IN RETURN AIR DUCT FOR EMERGENCY FAN SHUT-DOWN AND INTERLOCK WITH UNIT.
- ⑥ RUN SEPARATE 120 VOLT 20A CIRCUIT (2) #12 WITH GROUND IN 3/4" CONDUIT TO EACH ROOFTOP UNIT. CONNECT TO NEAREST 120 VOLT POWER.

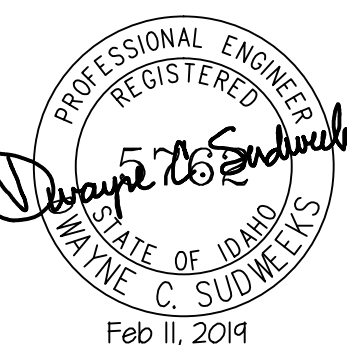
GENERAL NOTES:

- A- THE CONTRACTOR SHALL CHECK AND VERIFY ALL DIMENSIONS AND CONNECTIONS ON THE JOB SITE. ALL WORK SHALL BE EXECUTED FROM MEASUREMENTS TAKEN AT THE SITE.
- B- THE MECHANICAL CONTRACTOR SHALL BE RESPONSIBLE TO INSURE PROPER CODE CLEARANCES FOR ELECTRICAL AND MECHANICAL ACCESS WHEN INSTALLING ANY EQUIPMENT SUPPLIED BY THE MECHANICAL CONTRACTOR.
- C- IT IS CRITICAL THAT THIS CONTRACTOR COORDINATE EQUIPMENT LOCATIONS WITH PIPING, DUCTWORK, ELECTRICAL CONDUIT AND BUILDING STRUCTURE TO INSURE CODE COMPLIANCE.
- D- CEILING DIFFUSERS ARE SHOWN IN APPROXIMATE LOCATIONS. REFER TO LIGHTING PLANS AND REFLECTED CEILING PLAN FOR EXACT LOCATIONS.
- E- DUCT DIMENSIONS CALLED OUT ON DRAWINGS ARE INSIDE FREE AREA DIMENSIONS. ACOUSTICAL DUCT LINER ARE TO BE ADDED TO OVERALL MEASUREMENTS.
- F- ALL DUCTWORK AND PIPING WHICH PASSES THRU FIRE RATED WALLS TO BE FIRE STOPPED WITH APPROVED FOAM OR SEALANT. REFER TO SPECIFICATIONS FOR APPROVED MANUFACTURES.



Engineered Systems Associates
Mechanical Engineers
Dwayne Sudweeks
1355 East Center - Pocatello, Idaho 83201
Phone: (208) 233-0501 Fax: (208) 233-0529 email: esa@engsystems.com

PROJECT: **ROOFTOP UNIT REPLACEMENT FOR: HIGHLAND HIGH SCHOOL**
POCATELLO SCHOOL DISTRICT #25 POCATELLO, IDAHO
SHEET TITLE: **GYMNASIUM MECH. / ELEC. PLAN**



DRWN. BY: SR	CHK. BY: DCS
JOB NO. 180256	DATE: FEB. 2014

SHEET:
ME-2
OF: **THREE**